

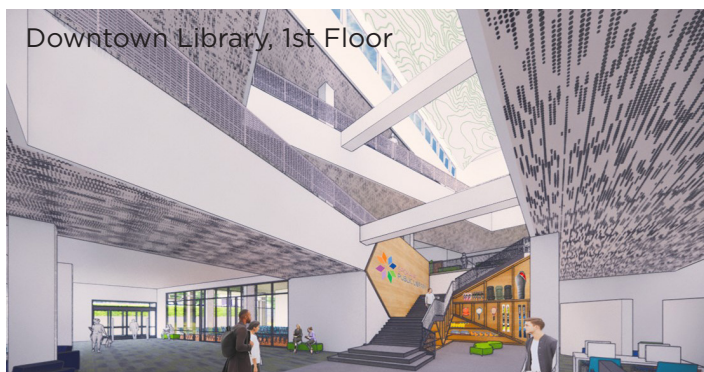
# Building the Library of the Future

## Bond Project Updates: Our 2018 Bond Projects are On Time and On Budget

The first project from the 2018 bond, a replacement of **Hillyard Library** within the new Shaw Middle School (funded by the 2018 Spokane Public Schools bond), is underway with a groundbreaking on October 1, 2019. This project was designed by Integrus Architecture of Spokane and is being built by Lydig Construction of Spokane.



The **Downtown Library** renovation includes recapturing the first floor staff area for public use, connecting the existing elevators to all floors, and creating an improved children's discovery area and a quiet reading room. Capital improvements include replacing the aging roof membrane and the obsolete ozone-depleting chiller. Designed by G4 Architecture of San Francisco and built by Walker Construction of Spokane, the Downtown Library will close for construction on February 29, 2020 and is scheduled to be completed in 2022. A temporary location will open at the STA Plaza on March 2, 2020.



The **Shadle Library** renovation will expand the library to 30,000 sq. ft. The new space will include 3 large program rooms, 5 study rooms, a children's discovery area, a quiet reading room, and a drive-thru book drop. Designed by G4 Architecture of San Francisco and built by Garco Construction of Spokane, Shadle Library will close for construction on December 22, 2019 and is scheduled to be completed in 2021. An alternate location will open in the Northtown Mall on January 2, 2020.



See more at  
[future.spokanelibrary.org](https://future.spokanelibrary.org)





# Your 2018 Library Bond Dollars at Work

The new **Liberty Park Library** will replace the existing East Side Library. The new library will nearly double in size and the design will reflect a sleek and modern aesthetic, maximizing westward views of the park. This space emphasizes a children's discovery area, features a program space that is more than twice the size of the existing meeting room at the current East Side Library, and includes two new quiet study rooms. Designed by Integrus Architecture of Spokane, the construction company has not yet been selected. Construction will begin in Spring 2020.



In partnership with Spokane Public Schools, the Library is building a cutting-edge facility on the corner of E. Sprague and S. Haven across from Libby Center. Affectionately called **The Hive™** for the variety of learning activities that will take place there, this building will provide not only a new teacher training facility and offices for Spokane Virtual Learning but also a location for 21st century public library services like maker spaces and event galleries. This project is designed by Integrus Architecture of Spokane, the construction company has not yet been selected. Construction will begin in Spring 2020.

The **South Hill Library** and the **Indian Trail Library** will also be remodeled, with the Design Phase of those projects to begin in 2020.

